

CATIA

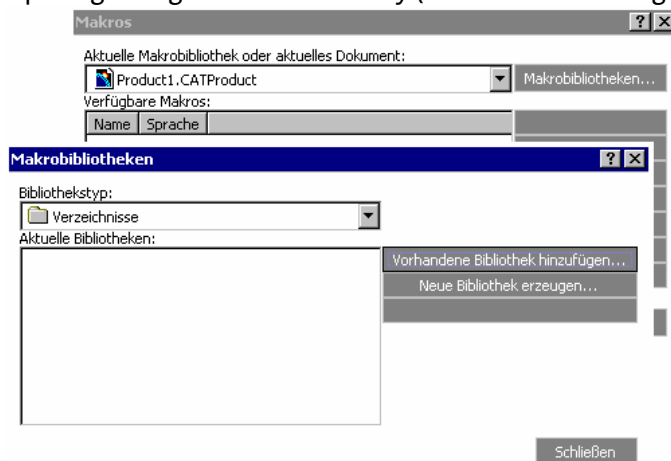
Data import occurs by macro that is created in CFturbo for the respective geometry. This macro is loaded in Catia V5 and executed. It loads curves and designs surfaces out of it.

FOR IMPELLERS AND VOLUTES

LOADING THE MACRO

Opening the macro dialog:

- Tools | Macro | Macros or shortcut combinations <Alt> + <F8>
- Selecting the macro library
- Create new macro library if it does not exist yet: select the button <macro libraries ...> and in the opening dialog select the directory (button <Add existing library...>)



- After directory selection: return to the macro dialog with <close>
- Select macro and execute